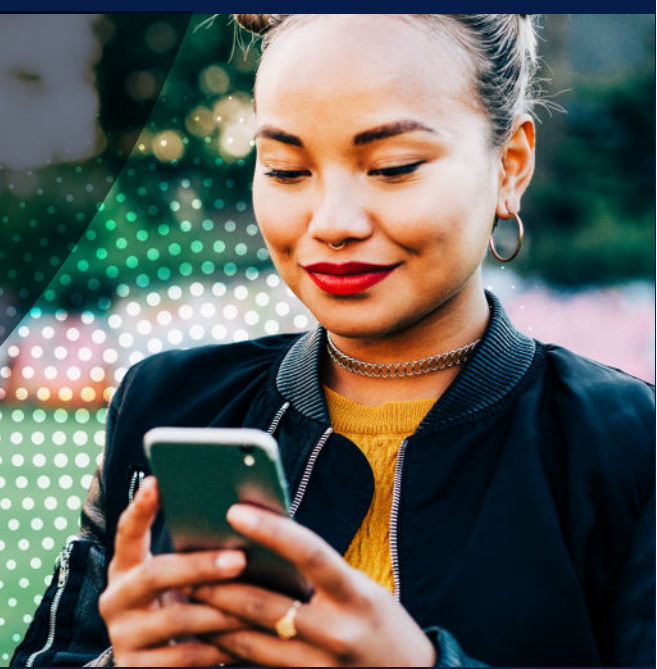


Empowering the Future of Asia Pacific Through Connectivity



As a global leader in satellite communications, we've been connecting the emerging greenfield markets and most advanced nations of Asia Pacific with innovative solutions and premium solutions for 60 years -- and we're just getting started!

From Major Cities to Remote Areas, We are Committed to Connecting All of Asia Pacific



Only high-throughput satellite (HTS) fleet covering the entire Asia Pacific



First satellite operator to bring managed cellular backhaul services to top MNO in Japan



Continuous investments in state-of-the-art ground infrastructure and new IntelsatOne IP PoP* in Mumbai

*Point of Presence



Strong local presence with seven permanent offices and on-the-ground teams



Best-in-class NOC* and software development division in Japan and India to provide technical support

*Network Operations Center



Supporting MNOs to transition their networks from 2G/3G to 4G, and in some cases to 5G

Continent-Wide Content Distribution

230M+

Households Reached in Asia Pacific

1100+

Channels across Multiple Genres

7

Premier Video Neighborhoods to Deliver Your Content Worldwide

Closing the Digital Divide and Advancing Connectivity

10M+

Cellular Subscribers Covered Through Partnerships in the Region

4,000

4G Managed Cellular Backhaul Sites Delivered for Tier 1 MNO

Connecting More People and Things in More Places

From delivering Universal Access services to users across the world's largest archipelago, to providing first-ever internet connectivity services to remote islands in the Pacific



High-performance connectivity in the air and on the sea



Enabling Japan Airlines to be one of the first in the region to offer reliable, multi-orbit service using Intelsat's new electronically steered array (ESA) antenna.



Empowering thousands of vessels at sea to synchronize with onshore operations and delivering services for crew and passengers.

Providing network resiliency and ensuring ongoing voice and internet connectivity, especially to remote islands such as Palau and Marshall Islands, and other regions along the Pacific Rim prone to natural disasters that may sever submarine cable systems.



World's Most Trusted Satellite Communications Network



Largest provider of satellite capacity to the U.S. government



Provide inflight connectivity to 25 commercial airline partners and nearly 3,000 aircraft



Deliver TV and radio content to more than 500 million households worldwide



Serve the majority of the world's top 10 mobile network operators

One Global Network for a Hyperconnected World



55+ Satellites



200K+ Fiber Miles



20 Global Offices



100+ Teleports & PoPs
*Includes partner teleports



650TBs Daily IntelsatOne Traffic



99% Coverage of the World's Populated Regions

Intelsat believes in a connected Asia Pacific where all communities will gain access to healthcare, education, and financial services for an improved quality of life.

To learn more visit [intelsat.com](https://www.intelsat.com)