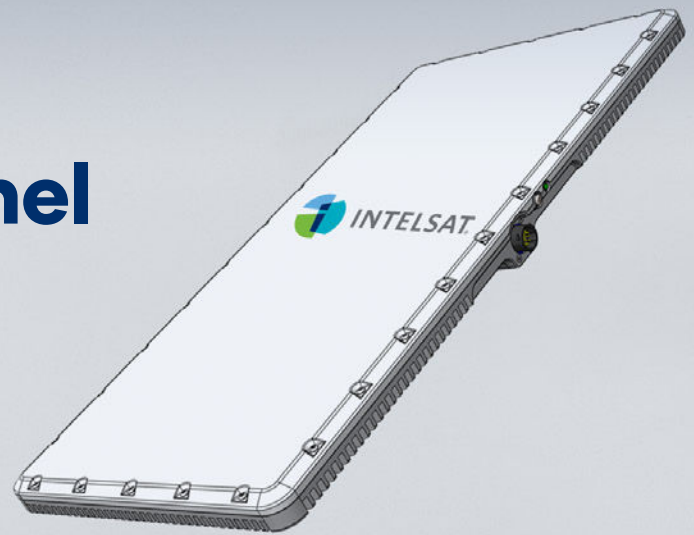


# Intelsat Universal Flat Panel

## Electronically Steered FlexMove Antenna for Industrial Operations On-the-Move



### Intelsat FlexMove Satellite Terminal for Fleet Connectivity

Satellite is no longer viewed as a last resort by heavy equipment and transport vehicle manufacturers supporting industrial operations and land transport companies. Manufacturers now consider satellite connectivity to be a critical component to ensure their connectivity platforms work everywhere.

Intelsat's Universal Flat Panel terminal with FlexMove for fleet connectivity is the optimal solution for ensuring industrial heavy equipment and crews stay connected when moving in locations where cellular coverage is spotty or non-existent. And open architecture enables easy integration with any fleet connectivity platform and existing network.



Powered by the Intelsat global, high-throughput, multi-layered satellite network



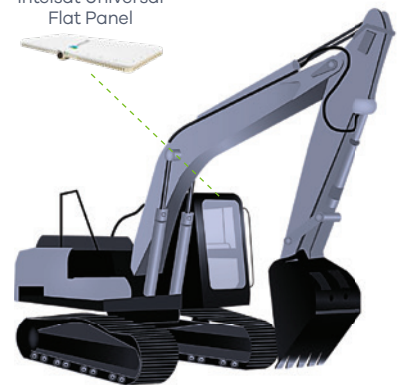
Integrates with any fleet connectivity platform for reliable fleet and crew connections

### Terminal Solution for Fleet Connectivity

#### Low-Profile Antenna Assembly with Integrated GEO Modem

- Single unit Electronically Steerable Antenna (ESA)
- Easy-to-use end user experience
- Vehicle space efficiency eliminating in-cabin units
- Weight efficiency: for quick implementation of OEM, factory installation

Intelsat Universal Flat Panel





## Intelsat Universal Flat Panel

- Innovative technology, enabling portable itinerant operations or fully mobile operations, for various applications in the field
- Dynamic Ku terminal is a low-cost, compact satellite device with unique state-of-the-art design & technology
- Comprises an electronically steerable antenna and a built-in modem, providing a mountable, all-in-one solution

## SPECIFICATIONS

### INTELSAT HTS DATA RATES

1 Mbps (FL) / 1 Mbps (RL)

### ANTENNA TECHNOLOGY

ESA

### DIMENSIONS: H / W / D

41 x 290 x 604 mm / 1.62 x 11.5 x 24 in

### WEIGHT

< 6 kg / <13.23 lbs

### TX & RX POWER CONSUMPTION

Standby: <10W, Tx & Rx: <120W

### DUST / WATER INGRESS

IP67

### VIBE / SALT SPRAY

SAE J1455

### OPERATIONAL TEMPERATURE

-20°C to +55°C / -4°F to 131°F  
(with optional external heat dissipation unit for up to +70°C)

### DC INPUT RANGE

12-36 VDC Pin Connector

### USER INTERFACE

One LED (Status), 1 Reset Button

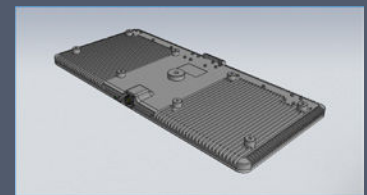
### CIRCULAR CONNECTOR

DC, Ethernet, Wake

### WIRELESS

Wi-Fi supported. BLE and Cellular options coming soon.

Intelsat Universal  
Flat Panel for FlexMove  
fleet connectivity solution



### Africa

+27 11-535-4700

sales.africa@intelsat.com

### Asia-Pacific

+65 6572-5450

sales.asiapacific@intelsat.com

To learn more about Intelsat FlexMove, visit [intelsat.com/land-mobility](https://intelsat.com/land-mobility) or contact your local sales representative.

### Europe

+44 20-3036-6700

sales.europe@intelsat.com

### Latin America & Caribbean

+1 305-445-5536

sales.lac@intelsat.com

### Middle East & North Africa

+971 4-390-1515

sales.mena@intelsat.com

### North America

+1 703-559-6800

sales.na@intelsat.com